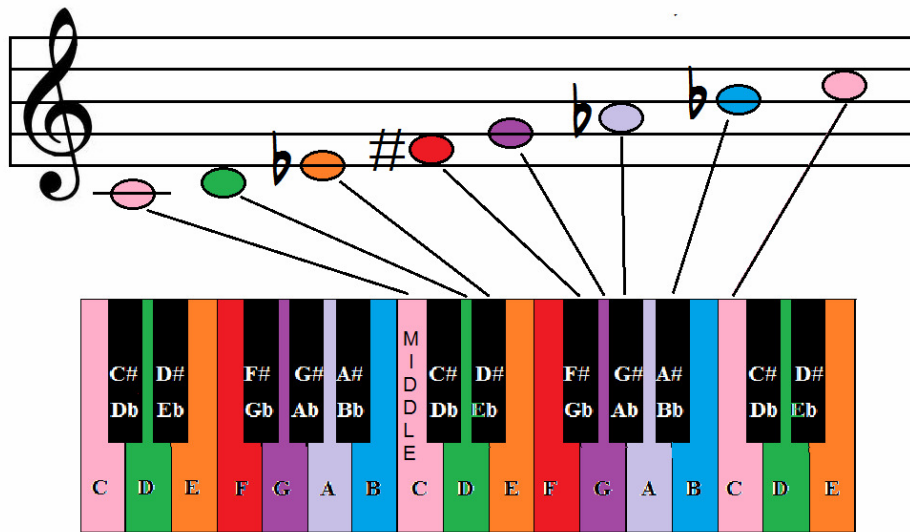


# THE PIANO & KEYBOARD, AND THE C HUNGARIAN GYPSY SCALE IN THE TREBLE CLEF

Following is a diagram illustrating where the notes of the C Hungarian gypsy scale are in the treble clef and their corresponding positions on the keys of a keyboard.



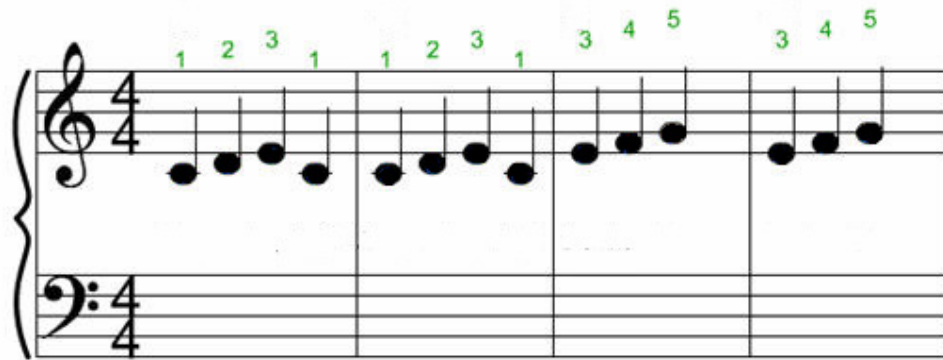
Created by Agnieszka Esterka Krysiak 2011

When playing the keyboard and piano, unless a score specifies otherwise, the right hand is used to play notes in the treble clef staff.

This picture shows the finger numbers for the fingers in the right hand



Regularly, a score written for a piano/keyboard will have finger numbers attached to particular notes within the score. For example, the following four bar score has finger numbers above each note.



If a finger number is attached to a specific note in a music score, it indicates to a player that he or she should use that finger number on the hand specified